



Ettes Power Deutz marine generator set are driven by engine made by diesel-engine-assemble-plant affiliated to CSIC (China Shipbuilding Industry Corporation), the engines are made under advanced technology from MWM-Deutz Germany, mainly application fields are Military Naval Vessels, Shipyards, Oilfields and Mining industry etc.

Main Features of Deutz series marine engines

- Economical: one of the lowest fuel consumption in the world.
- High reliability and long life-span, the first overhaul can reach 24000 hours.
- Perfect starting ability: can start successfully at -10°C without any accessories.
- Perfect low load condition: the air inlet system choose "HALLO" technical to improve burning performance and reduce fuel consumption.
- Convenient maintenance: simple & reliable structures provides convenient maintenance and inspection.
- Low exhaust temperature, low thermal load, before and after turbo is 600 C and 450 C.
- Low noise, 105~107dB(A) when driving alternator without soundproof enclosure.



DEUTZ MARINE DIESEL GENERATORS (150kW~1500kW @50Hz, 1500RPM)

Model	Prime Power	Standby Power	Engine Model		Alternator	No. of Cylinders & Type	Bore×Stroke (mm)	DSPL. (L)	Overall dimension (L*W*H) (mm)	Weight (kg)
	kW/kVa	kW/kVa	DEUTZ	Engine Prime Power (kW)	Siemens Marathon or Equal					
EDM-188	150/188	165/206	TBD234V6	186	1FC Series	6.V	128/140	10.8	2300*1122*1800	3000
EDM-200	160/200	176/220	TBD234V6	186	1FC Series	6.V	128/140	10.8	2300*1122*1800	3000
EDM-225	180/225	200/250	TBD234V6	205	1FC Series	6.V	128/140	10.8	2300*1122*1800	3000
★EDM-250A	200/250	220/275	TBD314V6	240	1FC Series	6.V	132/140	11.5	2775*1130*1850	3200
EDM-250B	200/250	220/275	TBD234V8	249	1FC Series	8.V	128/140	14.4	2550*1122*1860	3300
EDM-300	240/300	264/330	TBD234V8	273	1FC Series	8.V	128/140	14.4	2550*1122*1860	3300
EDM-350B	280/350	308/385	TBD314V8	330	1FC Series	8.V	132/140	15.3	3000*1190*1890	4000
EDM-375	300/375	330/413	TBD234V12	373	1FC Series	12.V	128/140	21.6	3674*1268*1900	4500
EDM-400	320/400	352/440	TBD234V12	373	1FC Series	12.V	128/140	21.6	3674*1268*1900	4500
EDM-450	360/450	400/500	TBD604BL6	450	1FC Series	6.L	170/195	26.6	3480*1349*2130	5200
★EDM-500A	400/500	440/550	TBD314V12	480	1FC Series	12.V	132/140	23	3480*1349*2130	5200
EDM-500B	400/500	440/550	TBD604BL6	450	1FC Series	6.L	170/195	26.6	3480*1349*2130	5200
EDM-560	450/560	500/625	TBD604BL6	550	1FC Series	6.L	170/195	26.6	3480*1349*2130	5400
EDM-600	480/600	528/660	TBD604BL6	550	1FC Series	6.L	170/195	26.6	3480*1349*2130	5500
EDM-625A	500/625	550/688	TBD604BL6	550	1FC Series	6.L	170/195	26.6	3480*1349*2130	5500
EDM-625B	500/625	550/688	TBD620L6	650	1FC Series	6.L	170/195	26.6	3480*1349*2130	5500
EDM-700	560/700	616/770	TBD620L6	650	1FC Series	6.L	170/195	26.6	3480*1349*2130	6600
EDM-750A	600/750	660/825	TBD620V8	834	1FC Series	8.V	170/195	35.4	4022*1695*2273	7200
EDM-750B	600/750	660/825	CHD316V16	768	1FC Series	16.V	132/160	35	TBA	TBA
EDM-800A	640/800	704/880	TBD620V8	834	1FC Series	8.V	170/195	35.4	4022*1695*2273	7200
EDM-800B	640/800	700/875	CHD316V16	768	1FC Series	16.V	132/160	35	TBA	TBA
EDM-850	680/850	748/935	CHD316V16	768	1FC Series	16.V	132/160	35	TBA	TBA
EDM-875	700/875	770/963	TBD620V8	834	1FC Series	8.V	170/195	35.4	4022*1695*2273	7200
EDM-900	720/900	800/1000	TBD620V8	834	1FC Series	8.V	170/195	35.4	4022*1695*2273	7200
EDM-938	750/938	825/1032	TBD620V8	834	1FC Series	8.V	170/195	35.4	4022*1695*2273	7200
EDM-1000	800/1000	880/1100	TBD620V12	1251	1FC Series	12.V	170/195	53.2	4795*1965*2273	9500
EDM-1125	900/1125	1000/1250	TBD620V12	1251	1FC Series	12.V	170/195	53.2	4795*1965*2273	9500
EDM-1250	1000/1250	1100/1375	TBD620V12	1251	1FC Series	12.V	170/195	53.2	4795*1965*2273	9500
EDM-1375	1100/1375	1210/1512	TBD620V12	1251	1FC Series	12.V	170/195	53.2	4795*1965*2273	9500
EDM-1500	1200/1500	1320/1650	TBD620V16	1668	1FC Series	16.V	170/195	70.9	5085*1800*2500	12500
EDM-1875	1500/1875	1650/2063	TBD620V16	1668	1FC Series	16.V	170/195	70.9	5085*1800*2500	12500

Remarks:

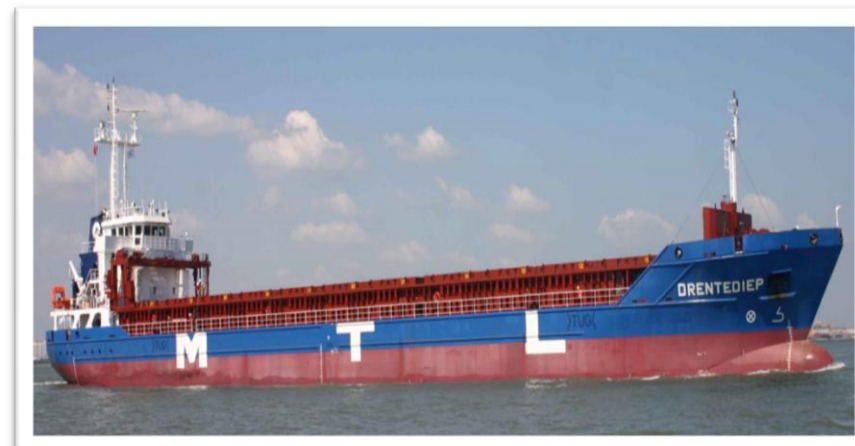
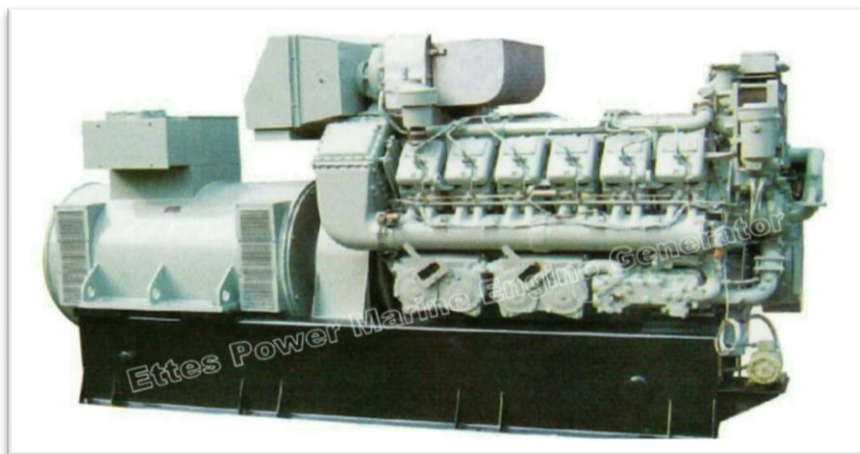
- Above gensets is based on standard ratings of 50Hz, AC415V, 3 Phases & 3 Wires, other voltages is available.
- Above gensets are with CCS Certificate as standard, BV, ABS, DNV-GL are optional.
- Above engines emissions conditions are based on IMO TIER II and EIAPP.
- The engine models marked “★” not available now, for more details, please consult Ettes Power.
- The data herein can vary depending on individual production requirements or due to improved technology.

DEUTZ MARINE DIESEL GENERATORS (180kW~1600kW @60Hz, 1800RPM)

Model	Prime Power	Standby Power	Engine Model		Alternator	No. of Cylinders& Type	Bore×Stroke (mm)	DSPL. (L)	Overall dimension (L*W*H) (mm)	Weight (kg)
	kW/kVa	kW/kVa	DEUTZ	Engine Prime Power (kW)	Marathon Siemens or Equal					
EDM-225	180/225	200/250	TBD234V6	222	1FC Series	6.V	128/140	10.8	2300*1122*1800	3000
EDM-250	200/250	220/275	TBD234V6	244	1FC Series	6.V	128/140	10.8	2300*1122*1800	3000
EDM-300A	240/300	264/330	TBD234V8	296	1FC Series	8.V	128/140	14.4	2550*1122*1800	3300
★EDM-300B	240/300	264/330	TBD314V6	272	1FC Series	6.V	132/140	11.5	2775*1130*1850	3200
EDM-313	250/313	275/344	TBD234V8	296	1FC Series	8.V	128/140	14.4	2550*1122*1800	3300
EDM-350	280/350	308/385	TBD234V8	296	1FC Series	8.V	128/140	14.4	2550*1122*1800	3300
EDM-375	300/375	330/413	TBD314V8	363	1FC Series	8.V	132/140	15.3	3000*1190*1890	3900
EDM-400	320/400	352/440	TBD314V8	363	1FC Series	8.V	132/140	15.3	3000*1190*1890	3900
EDM-450	360/450	400/500	TBD234V12	444	1FC Series	12.V	128/140	21.6	3674*1268*1900	4500
EDM-500	400/500	440/550	TBD234V12	444	1FC Series	12.V	128/140	21.6	3674*1268*1900	4500
★EDM-563	450/563	500/625	TBD314V12	545	1FC Series	12.V	132/140	23	3674*1190*1890	5500
★EDM-600A	480/600	528/660	TBD314V12	545	1FC Series	12.V	132/140	23	3674*1190*1890	5500
EDM-600B	480/600	528/660	TBD604BL6	540	1FC Series	6.L	170/195	26.6	3480*1349*2130	5500
EDM-625	500/625	550/688	TBD604BL6	600	1FC Series	6.L	170/195	26.6	3480*1349*2130	6000
EDM-675	540/675	594/743	TBD604BL6	600	1FC Series	6.L	170/195	26.6	3480*1349*2130	6000
EDM-750	600/750	660/825	TBD620L6	690	1FC Series	6.L	170/195	26.6	3480*1349*2130	6600
EDM-900	720/900	800/1000	TBD620V8	910	1FC Series	8.V	170/195	35.4	4022*1695*2273	7200
EDM-938	750/938	825/1031	CHD316V16	864	1FC Series	16V	132/160	35	TBA	TBA
EDM-1000	800/1000	880/1100	TBD620V8	910	1FC Series	8.V	170/195	35.4	4022*1695*2273	7200
EDM-1250	1000/1250	1100/1375	TBD620V12	1364	1FC Series	12.V	170/195	53.2	4795*1965*2273	9500
EDM-1375	1100/1375	1210/1512	TBD620V12	1364	1FC Series	12.V	170/195	53.2	4795*1965*2273	9500
EDM-1500	1200/1500	1320/1650	TBD620V12	1364	1FC Series	12.V	170/195	53.2	4795*1965*2273	9600
EDM-1875	1500/1875	1650/2063	TBD620V16	1819	1FC Series	16.V	170/195	70.9	5085*1800*2500	12500
EDM-2000	1600/2000	1760/2200	TBD620V16	1819	1FC Series	16.V	170/195	70.9	5085*1800*2500	12500

Remarks:

- Above gensets is based on standard ratings of 60Hz, AC440V, 3 Phases & 3 Wires, other voltages is available.
- Above gensets are with CCS Certificate as standard, BV, ABS, DNV-GL are optional.
- Above engines emissions conditions are based on IMO TIER II and EIAPP.
- The engine models marked “★” not available now, for more details, please consult Ettes Power.
- The data herein can vary depending on individual production requirements or due to improved technology.



ETTES POWER MACHINERY CO LTD

The Key Supplier for Complete Power Generating Systems

Tel: +86-22-23796980

E-mail: info@ettespower.com

Fax: +86-22-23796811

Internet: www.ettespower.com

