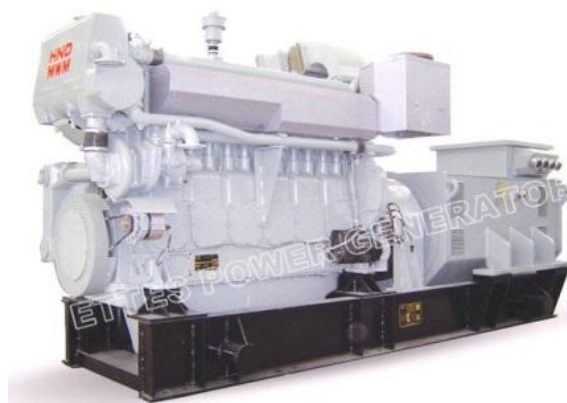


Model	EDM-625A/CCFJ500J (50Hz)
Standby Power(50Hz)	550kW /688kVa
Prime Power(50Hz)	500kW /625kVa

## Standard Features

- Marine Engine (Deutz TBD604BL6)
- Heat Exchanger and Water Pump (for marine main power)
- Radiator (standard for marine emergency power genset or optional for marine main power genset)
- 24V battery and charger (optional)
- Alternator((Marathon, ABB, Siemens or Equal), single bearing alternator, Protections Class IP23/IP44, insulation class H/H)
- Absorber
- Standard control panel
- Muffler (optional)
- Start batteries, rack and cable (optional)
- Ripple flex exhaust pipe, exhaust siphon, flange
- Soundproof Canopy (optional)
- Air Start or Spring Start or Double Electrical Start (optional for emergency power genset)
- Tools kits
- User manual



## General Ratings

Voltage	Hz	Phases & Wires	P.F (COS $\phi$ )	Rated Current (Amps)	Standby Ratings (kW/kVa)	Prime Ratings (kW/kVa)
400	50	3&3	0.8	902	550/688	500/625
415	50	3&3	0.8	869	550/688	500/625

Remarks: Other special voltage requirements are available.

## Standards

- GB/T13032-1991, ISO9001:2008 and CE Quality Control System.
- As to Classification Society, Ettes Power supply CCS as standard; ABS, BV, DNV-GL or LR are optional.

## Sales Promises

Ettes Power provides a full line of brand new and high quality products. Warranty 12 months or 2,000 running hours, which is subject to the earlier one.


## Marine Diesel Engine Data

Engine Brand	HND-DEUTZ MWM
Maker	CSIC (China Shipbuilding Industry Corporation)
Engine Model	TBD604BL6, 4 Stroke, Water Cooled.
Number of Cylinders	6 cylinders in Line
Aspiration	Turbocharged and After-cooled
BorexStroke	170 x195 mm
Rated Speed	1500 RPM
Displacement	26.58 L
Compression Ratio	14:1
Prime Power	550kW /737HP
Speed Governor	Electrical
Standard Cooling System	By heat exchanger
Fuel Consumption at 100% Load	191 g/kW.h
Starter Motor	DC24V
Emission Standard	IMO TIER II, EIAPP Certificate

## Alternator Specification

Alternator Brand	Marathon, ABB, Siemens or Equal
Alternator Model	MX-H-500-4
Power Capacity	670kVa
Efficiency	94.1%
Type	Brushless, Self-excited and AVR
Power factor	0.8
Insulation Grade	H
Protection Grade	IP23(IP44 is optional)
Phase / wire	3 phase 3 wires

## Standard Local Control Cabinet

<p><b>Main Features:</b>          Functions &amp; Displays including Buttons, Switches, Indications lamps, Alarms, Protections, Controls, Communications etc.</p> <p>For detail data, please refer to:  <b>Appendix &amp; Accessory</b>-Technical Specs of Local Control Cabinet</p>	
--	--

## Standard Supply Scope

Complete standard open type marine diesel genset including:

- Engine
- Alternator
- Base Frame and Elastic Coupling
- Heat exchanger and sea water pump (for marine main power)
- Radiator (standard for marine emergency genset or optional for marine main genset)
- Local Control Cabinet
- Standard control system
- Technical documents (user books, parts catalog, drawings and diagrams)
- Bench testing report
- CCS and EIAPP certificates

## Optional Equipment

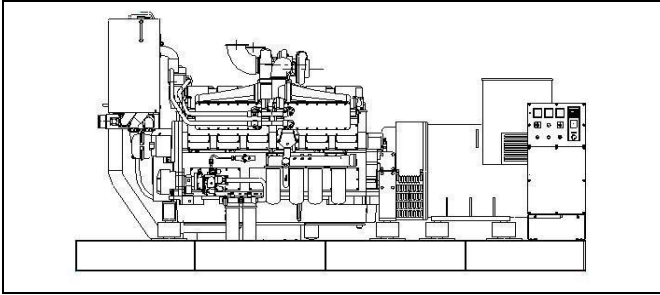
Engine	Alternator
<ul style="list-style-type: none"> <li>● Water Separator</li> <li>● Water and Oil Heater</li> <li>● Air Start or Spring Start or double electrical start (for emergency genset)</li> <li>● Battery and Charger</li> <li>● Exhaust Silencer</li> </ul>	<ul style="list-style-type: none"> <li>● Anti Condensation Heater</li> <li>● Permanent Magnet Generator(PMG)</li> <li>● Drop CT(For Paralleling)</li> </ul>
Control System	Others
<ul style="list-style-type: none"> <li>● Switchboard (circuit breaker)</li> <li>● (ATS) Control Panel (for emergency genset)</li> <li>● Parallel Control Panel</li> </ul>	<ul style="list-style-type: none"> <li>● Free Standing Fuel Tank</li> <li>● Soundproof Canopy</li> <li>● Rainproof Canopy</li> <li>● Fire Fighting System</li> <li>● Extra Spare Parts for future maintenance</li> </ul>

## Marine Classification Society Certification

Ettes Power will supply CCS (China Classification Society) as standard, which is the member of IACS (the International Association of Classification Societies) and chaired IACS Council respectively in 1996-1997 and 2006-2007.

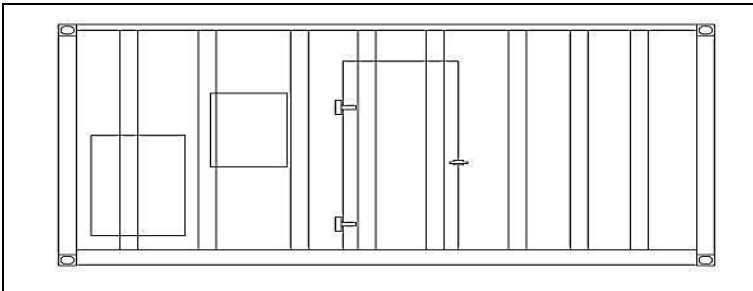
And, Ettes Power can also apply special certificates such as ABS, BV, DNV-GL or LR etc. according to the client's special requirements.

## Dimension & Weight



### Standard Configuration (Open Type)

Overall Size: 3480(mm)×1349(mm)×2130(mm)  
Weight:540 kg



### Soundproof Type

Overall Size: to be confirmed  
Weight: to be confirmed

